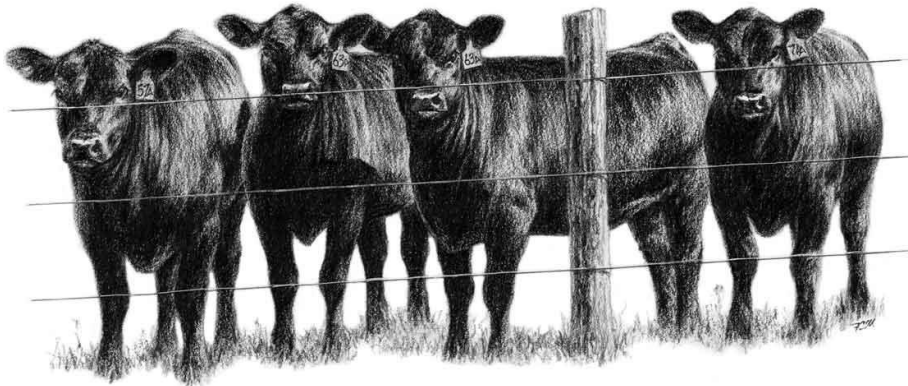


# Southern West Virginia Heifer Development Program



## **Kevin Shaffer, Ph.D., Program Coordinator**

West Virginia University Extension Service  
1194 Evansdale Drive, Rm G213  
P.O. Box 6108  
Morgantown, WV 26505  
Phone: 304-293-2669  
Email: Kevin.Shaffer@mail.wvu.edu

### **Mission:**

1. Provide opportunity for consignors to develop and evaluate genetic merit of replacement females
2. Provide commercial producers with a source of genetically superior heifers and the necessary data to accurately evaluate differences in genetic merit
3. Provide animals and data that can be used for educational programming

### **Location:**

Green Mesa Farm  
7312 Kanawha Valley Rd  
Henderson, WV 25106  
Phone: (304) 675-2776

The Southern West Virginia Heifer Development Program is sponsored by:

***WVU Cooperative Extension***  
***WVU Division of Animal and Nutritional Sciences***  
***West Virginia Department of Agriculture***  
***West Virginia Cattlemen's Association***

## **2022 – 2023 Rules and Regulations**

### **Section I: Eligibility**

#### **Consignors**

1. Cooperators must be a member of the West Virginia Cattlemen's Association.
2. Cooperators must be Beef Quality Assurance (BQA) Certified.
3. Cooperators must be enrolled in their respective breed association performance records program (ie. AHIR, TPR, CHIP, SMILE, etc.) if enrolling purebred heifers.

#### **Heifers**

1. A maximum of 115 heifers will be accepted for evaluation. Heifers determined pregnant by station veterinarian at the time of delivery will not be accepted.
2. Heifers must be born on or after December 25, 2021 through March 15, 2022.
3. Cooperators must consign at least three (3) head per breed group, and they must be contemporaries. If enrolling heifers from multiple contemporary groups, at least three (3) head must be enrolled from each contemporary group. Heifers must be weaned in a contemporary group of at least five (5) head.
4. All breeds of heifers are eligible; however, heifers must be registered with the appropriate breed association by the delivery date and registration numbers provided to the program coordinator. Composite heifers are also eligible but you must notify the program coordinator of the composite makeup and be able to provide sire and maternal grand sire breed and registration numbers.
  - A. Heifers must be sired by bulls with complete birth, weaning and yearling performance data, including yearling ultrasound data.
  - B. Composite heifers may not be composed of more than three breeds (i.e. their dam must be either straightbred or a two breed composite).
5. Heifers must have individual birth and weaning weight data collected and submitted to the appropriate breed association prior to the enrollment deadline.
  - A. Heifers must have a minimum weaning weight ratio of 90 and a minimum adjusted weaning weight of 475 lbs.
6. Heifers raised with or by nurse cows are not eligible.
7. Heifers that are carriers of known genetic defects as identified and recognized by their respective breed association are not eligible (*See Appendix III*).
  - A. Potential carriers of genetic defects must have been tested free prior to delivery and a copy of the test report must accompany heifers to the test station.

*Southern Heifer Development Program*

**Section II: Health Requirements**

1. Cooperator herds must comply with the vaccination requirements outlined in the West Virginia Quality Assurance Comprehensive Herd Health Program (See Appendix I). To maximize vaccine efficacy and calf health, cooperators must:
  - A. Provide all heifers with continuous access to a complete, well-balanced, loose mineral supplement beginning at least 60 days prior to weaning. A mineral supplement formulated for two (2) ounces consumption per head per day should contain these minimum concentrations:

- Zinc (Zn)	2500 ppm
- Copper (Cu)	1000 ppm
- Selenium (Se)	30 ppm
  - B. Keep vaccines out of direct sunlight and store vaccines and syringes in a cooler at all times.
  - C. Vaccinate during the cooler times of the day. Do not administer vaccines when the air temperature exceeds 86° F.
  - D. Avoid treating heifers for internal or external parasites within seven (7) days of delivery. Because heifers will be dewormed at delivery, administering parasite treatments during this time could increase transportation stress and the potential for cumulative drug toxicity.
  - E. Wean calves at least 45 days prior to delivery or no later than September 4, 2022.
2. Heifers with active pinkeye, ringworm, or warts at the time of delivery will not be accepted. The station manager and/or program coordinator reserve the right to reject any such heifer.
3. Horned heifers must be dehorned and fully healed prior to delivery to the teststation.
4. No heifer under federal or state quarantine may enter the test station.
5. Non-resident consignors must present a valid Certificate of Veterinary Inspection (CVI) prior to unloading heifers.

**Section III: Procedures for Entrance**

1. Complete Cooperator Enrollment Form and Purebred Heifer Nomination Form and/or Composite Heifer Nomination Form and submit to the program coordinator by **September 9, 2022** (must be postmarked by September 9, 2022). Late nominations will not be accepted.
  - A. Cooperators will be notified of the number of heifers accepted as soon as possible after the nomination deadline.
  - B. Preference will be given to resident cooperators from the previous year; however, new or non-resident cooperators will be accepted if space is available.
  - C. New or non-resident acceptance will be first come first serve with priority determined by the postmark date on the nomination form.
2. Wean and precondition heifers at least 45 days prior to delivery.

## *Southern Heifer Development Program*

- A. Collect weaning weights according to your breed association performance record guidelines (average of 205 days of age) and submit the data immediately for processing.
  - B. Feed heifers concentrate feeds between 0.5% and 1.0% of their body weight during the preconditioning period.
  - C. Administer booster vaccinations.
  - D. Bob tails.
3. Prepare the following paperwork for submission at the time of delivery. Please prepare paperwork in advance and proofread your work.

### **All Breeds:**

- Original Registration Certificate (*Signed by owner for transfer purposes*)
- Certificate of Vaccination
- Verification of negative Brucellosis and TB
- Certificate of Veterinary Inspection (CVI) (*Non-resident consignors only*)

### **Angus:**

- Individual AHIR Data Report
- Individual Produce of Dam Report

### **Hereford:**

- Yearling Worksheet (Form 3)
- Individual Performance Pedigree

- *See Appendix II for detailed instructions on how to obtain these reports. If enrolling a breed not shown above, contact program coordinator for instructions.*

**NOTE:** *Any heifer that does not have complete information at the time of delivery will not be accepted. There will be zero tolerance!*

4. Heifers will be received between 8:30 AM and 2 P.M. on Wednesday, October 19, 2022.
5. All heifers must remain on feed for the entire data collection period unless removed by management.
6. By participating in the Southern Heifer Evaluation Program, cooperators agree to allow the program coordinator to submit yearling data (ie. yearling weight and hip height) to breed association's for processing, to request updated EPDs and within herd yearling ratios for use in the sale catalog, and to allow the program coordinator and/or other WVU faculty to utilize collected data for research purposes.

## **Section IV: Sale Requirements**

1. To qualify for the Southern Heifer Sale, heifers must meet or exceed the following minimum independent culling levels :
  - Adjusted Weaning Weight (WW) ratio.....≥90
  - Adjusted Yearling Weight (YW) ratio.....≥ 90
  - Average Daily Gain (ADG).....≥ 1.25 lbs./day
  - USDA Muscle Score ..... > 1.0
  - Adjusted Pelvic Area..... > 2.0 SD below breed average

## *Southern Heifer Development Program*

**NOTE:** *Sale management reserves the right to make minor adjustments to eligibility requirements should conditions warrant.*

2. All registered heifers must have EPDs for birth weight, weaning weight, and milk. Registered heifers, except those resulting from embryo transfer, must have accuracies greater than the pedigree estimate (> 0.07) for birth and weaning weight EPDs.
3. All heifers must pass a Breeding Soundness Exam (BSE).
4. Heifers exhibiting problems with correctness of feet and legs or structural soundness will not be eligible for sale.
5. All heifers must have a negative Bovine Viral Diarrhea Persistent Infection (BVD-PI), Tuberculosis, and Brucellosis test within 30 days of the sale. If a heifer tests positive for Tuberculosis or Brucellosis, she will be quarantined and euthanized in accordance with state law. Heifers testing positive for BVD-PI must leave the test station immediately regardless of destination unless to slaughter.
6. The test committee reserves the right to disqualify any heifer because of health, disposition, lack of identification, or if in the committee's opinion, the heifer appears to be misrepresented. As a cooperator, you agree to allow management to obtain DNA samples for testing/evaluation.
7. All heifers failing to qualify for the sale or those which are being retained for within herd use will be released from the test station on the week of March 7<sup>th</sup>, 2023.
  - A. Cooperators must notify the program coordinator which, if any, sale eligible heifers they wish to retain for within herd use by February 28, 2023. If the cooperator fails to notify the program coordinator by the deadline, their heifer(s) will be included in the sale catalog, be auctioned on sale day, and be charged the appropriate sale fees.
  - B. Cooperators are encouraged to send inferior heifers to slaughter.

### **Section V: Sale**

1. At least 25% of heifers enrolled in the program will be offered for sale on March 17, 2023 immediately following the bull sale.
2. Sale order will be determined using an index consisting of available traits. The sale manager and executive committee reserve the right to adjust sale order as necessary.
3. As a cooperator, you agree to guarantee the ability of your heifers to breed if properly cared for.
4. Announcements at the sale will come from the auctioneer's box only and will take precedence over any printed material.
5. Auctioneer: Daniel Mitchell

## *Southern Heifer Development Program*

### **Section VI: Costs**

1. Pre-sale test costs per heifer are:

- Station Fee .....	\$10.00
- Management Fee .....	\$40.00
- Advertising Fee .....	\$35.00
- Feed/Bedding (approximate) .....	\$225.00
- Veterinary	
- Preventative Health (approximate) .....	\$45.00
- Treatment (approximate) .....	\$10.00
- Breeding Soundness Exam .....	\$5.00
- Yearling Ultrasound Data .....	\$20.00
Estimated Total	<u>\$390.00</u>

A. If a heifer dies or is removed from the program prior to completing the test, the cooperator will pay all costs accumulated up to the removal date.

B. A fee of \$250 per heifer is due upon delivery to the teststation.

2. Sale costs (WVCA and auctioneer fee—approx. 2% of gross sales) will be assessed to all heifers auctioned on sale day. Heifers that fail to bring the floor price will be charged sale commission.

### **Section VII: Liability**

Heifers enrolled in the Southern Heifer Evaluation Program will receive appropriate management. Professional veterinary services will be utilized when deemed necessary by the station manager and/or program coordinator. The program sponsors assume no liability, legal or otherwise, for loss of heifers, property damage, personal injury, or accuracy of collected data and printed information.

### **Section VIII: 2022-2023 Schedule**

Eligible Birth Dates:	December 25, 2021 – March 15, 2022
Enrollment/Nomination Deadline:	September 9, 2022
Weaned:	No later than September 4, 2022
Booster Vaccination:	No later than September 4, 2022

#### **85-day Performance Evaluation Period**

Delivery:	October 19, 2022
On Test:	November 17 and 18, 2021
First Intermediate Weight:	December 14, 2022 (Delouse)
Second Intermediate Weight:	January 11, 2023
Off Test:	February 9 and 10, 2023 (Clip for Ultrasound/Pelvic/HH)
Ultrasound:	Week of February 13, 2023
Muscle/Structure Score:	Week of February 6, 2023
BSE:	Week of February 20, 2023
Sale:	March 17, 2023 @ 6:00 PM

# Appendix I

## WV Beef Quality Assurance Comprehensive Herd Health Program

K. Shaffer, WVU Extension Specialist  
D. Matlick, WVU Extension Veterinarian

### Pre-breeding:

#### Cows/Heifers/Bulls – Post-calving but 30-60 days prior to breeding

1. IBR, PI3, BVD, BRSV – Modified live (Use Fetal Protection (FP) Products)
2. Lepto 5 and/or L. hardjo bovis—(*Vibrio Optional*)
3. 7-way Clostridial (Yearling Replacement Heifers)
4. Pinkeye (Optional)
5. Deworm yearling heifers—Cows/Bulls optional depending upon body condition

#### Calves

1. IBR, PI3, BVD, BRSV - Modified live (BVD optional in spring)
2. 7-way Clostridial
3. Pasteurella multocida and Mannheimia haemolytica (Optional)
4. Pinkeye (Optional)

### Pre-vaccination/Weaning:

#### Calves – Three to four weeks prior to weaning

1. IBR, PI3, BVD, BRSV - Modified live
2. Lepto 5 and/or L. hardjo bovis \*\*\*
3. 7-way Clostridial
4. Pasteurella (Pasteurella multocida and/or Mannheimia haemolytica)
5. Deworm (White wormers are working best)

#### Calves – Booster at Weaning

1. IBR, PI3, BVD, BRSV - Modified live
2. Lepto 5 and/or L. hardjo bovis \*\*\*
3. 7- way Clostridial
4. Deworm (White wormers are working best)
5. All other products used at pre-vaccination that label requires booster

\*\*\* *Vibrio* is optional for pregnancy protection; however, if using vaccines containing *Vibrio* and Lepto 5, they must be administered separately from Pasteurella vaccines to minimize the risk of endotoxemia.

\*\*\* All vaccinations (boosters) must have been administered at least 30 days prior to delivery.

### Preg-Check:

1. *Vibrio*, Lepto 5 and/or L. hardjo bovis (Optional)
2. Deworm thin cows and heifers

### Pre-Calving:

1. Rotavirus, Coronavirus, Clostridium perfringens Type C, K99 E. coli. (Optional)
2. De-lice w/ non-generic pour-on

If you have questions about what products meet these requirements, contact the program coordinator.

## Appendix II

### Angus:

#### Individual AHIR Data Report

1. Login to your AAA online account.
2. Under the **MY HERD** tab, click on **Animal Lists** then **Current Calf Inventory**.
3. Select the second option for narrowing your inventory search.
  - a. Set the **Birth Date Range** to **Begin: 12/25/2021** and **End: 03/15/2022**.
  - b. Click on the **Sex** drop down list to the right and select **Cow**.
  - c. Click **Search**.
4. Scroll down to find a heifer you have enrolled and click on **AHIR Data** at the far right.
5. Click on **Printable Version** at the top left hand corner of the screen.
6. Print the PDF file.
7. Repeat steps 4-6 for each heifer you are enrolling.

#### Individual Produce of Dam Report

1. Login to your AAA online account.
2. Under the **REPORTS** tab, click on **Dam Reports** then **Produce of Dam Report**.
3. Click **Search**.
4. Scroll down to find the dam of a heifer you have enrolled and click on her **Tag #**.
5. Print the PDF file.
6. Repeat steps 4 and 5 for the dam of each heifer you are enrolling.

### Hereford:

#### Yearling Worksheet (Form 3)

1. Login in to your AHA online myHERD account.
2. Click on the **Reports** tab to view the drop down menu, then click on **Yearling Worksheet (Form 3)**.
3. Click on the file entitled **5465000\_FORM3\_2022Spring.pdf**. (The numbers at the beginning will be your breeder code. If you do not see a 2020 Spring file, click on the **Jobs** tab, then on **Analyze Calf Crop**, and submit a request for a **Weaning Report**. Allow 5-10 minutes for the report to generate and then repeat steps 2 and 3.)
4. Print the PDF file.

#### Dam Production Report

1. Login in to your AHA online myHERD account.
2. Click on the **Jobs** tab and then on **Dam Production Reports**. Select the **Year** as "2022" and **Season** as "Spring" and click **Submit Request**.
3. Allow 5-10 minutes for the report to generate and then click on the **Reports** tab to view the drop down menu. Click on **Dam Production Reports**.
4. Double click on **5465000\_DAM\_SMRY\_2022Spring.pdf**.
5. Print the PDF file.



## Appendix II

### Charolais:

#### Individual Weaning Data

1. Login to your AICA online account.
2. Hover over the heading **My Performance**.
3. Scroll down and click on **My Weaning**.
4. For each heifer enrolled, click on [View](#) in the right hand column.
5. Click on the [Performance](#) tab and print the page.

#### Individual Dam Summary

1. Login to your AICA online account.
2. Hover over the heading **My Reports**.
3. Hover over the heading **Sire\Dam Performance Summary**.
4. Click on **Dam Lifetime – Individual**.
5. Enter the Dam ID for a bull you are entering and click **Print**.
6. Print the PDF file.
7. Repeat steps 5 and 6 for each heifer enrolled.

### Simmental/SimAngus:

- Weaning Report
- Individual Dam Report

## Appendix III

Known carriers of the following genetic defects are not eligible. Potential carriers of the genetic defects identified and recognized by each breed association must be tested free and verification provided at delivery.

### **American Angus Association:**

Arthrogryposis Multiplex (AM)  
Neuropathic Hydrocephalus (NH)  
Contractual Arachnodactyly (CA)  
Developmental Duplication (DD)  
Myostatin (M1)  
Dwarfism (D2)  
Osteopetrosis (OS)  
Oculocutaneous Hypopigmentation (OH)

### **American Hereford Association:**

Hypotrichosis (HY)  
Dilutor (DL)  
Idiopathic Epilepsy (IE)  
Maple Syrup Urine Disease (MSUD)

### **American International Charolais Association:**

N/A

### **American Simmental Association:**

Arthrogryposis Multiplex (AM)  
Neuropathic Hydrocephalus (NH)  
Contractual Arachnodactyly (CA)  
Osteopetrosis (OS)  
Pulmonary Hypoplasia with Anasarca (PHA)  
Tibial Hemimelia (TH)  
Dwarfism (DW1)  
Idiopathic Epilepsy (IE)  
Hypotrichosis (HT)  
Bovine Mannosidosis (BM)  
Oculocutaneous Hypopigmentation (OH)

### **North American Limousin Foundation:**

Arthrogryposis Multiplex (AM)  
Neuropathic Hydrocephalus (NH)  
Contractual Arachnodactyly (CA)  
Osteopetrosis (OS)  
Pulmonary Hypoplasia with Anasarca (PHA)  
Tibial Hemimelia (TH)

# Cooperator Enrollment Form

## Southern Heifer Development Program

Name: \_\_\_\_\_

Address: \_\_\_\_\_

Phone: \_\_\_\_\_ Email: \_\_\_\_\_

**NOTE:** *If you cannot answer YES to questions 1, 2, or 3, you may not be eligible to participate in the SHDP.*

1. Are you BQA certified?  Yes  No

2. Are you a member of the West Virginia Cattlemen's Association?  Yes  No

3. Are you enrolled in your breed association performance records program?  Yes  No

4. Did you collect ultrasound data on your yearling replacement heifers in 2022?  Yes  No

a. If YES, how many heifers did you ultrasound? \_\_\_\_\_

5. Did you participate in the WVFPIP or an equivalent program in 2020 or 2021?  Yes  No

a. If YES, how many cattle (both sexes) did you collect feedlot and carcass data on? \_\_\_\_\_

6. Please indicate below the breed(s) of heifers you are nominating, the number of heifers per breed, and the number of cows of that breed you calved in 2022. You must enroll at least three (3) heifers per breed.

	Breed	Number of Heifers Nominated	Number of Cows Calved
1.	_____	_____	_____
2.	_____	_____	_____
3.	_____	_____	_____

*Submit enrollment forms to (must be postmarked by the enrollment deadline—September 9, 2022):*

Kevin Shaffer  
890 Tacy-Sunshine Ridge Rd  
Philippi, WV 26416

In nominating heifers for the Southern Heifer Evaluation Program, I verify that I have read and understand the rules and regulations for participating in the program and agree to abide by those rules, regulations, and methods. Furthermore, I understand that participation in the program is voluntary and that the sponsors of this program and their employees are not liable for the loss of any heifer, property damage, or personal injury that might occur.

Signature of Cooperator: \_\_\_\_\_ Date: \_\_\_\_\_



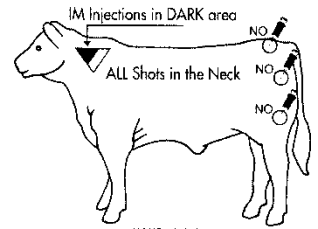




# Certificate of Vaccination

## Southern Heifer Development Program

*This certificate must accompany heifers to the development center.*



Herd Owner: \_\_\_\_\_

Address: \_\_\_\_\_

Phone: \_\_\_\_\_ Email: \_\_\_\_\_

**NOTE:** *The following required vaccinations must be administered under BQA guidelines as outlined in the WV Quality Assurance Comprehensive Herd Health Program.*

Vaccination	Date Administered	Product Used	Lot or Serial #
IBR, BVD, PI3, BRSV, Lepto 5 (MLV only—Vibrio optional)	Pre-weaning:		
	Weaning:		
7/8-Way Clostridial	Pre-weaning:		
	Weaning:		
Pasteurella	Pre-weaning:		
	Weaning:		
Parasite Control (Internal and External)	Pre-Weaning:		

In accordance with the WV Quality Assurance Comprehensive Herd Health Program and program rules, I have...

- |  |                              |                             |
|--|------------------------------|-----------------------------|
| A) administered the appropriate annual vaccinations to cows prior to breeding. | <input type="checkbox"/> Yes | <input type="checkbox"/> No |
| B) administered the appropriate spring vaccinations to calves.                 | <input type="checkbox"/> Yes | <input type="checkbox"/> No |

*Many herd health programs are compromised by mishandling of vaccines. To maximize vaccine efficacy, do the following:*

- *Avoid exposing vaccines to sunlight.*
- *Do not use the same syringe for different vaccines.*
- *Do not use alcohol to clean needles/syringes.*
- *Avoid hot days—Do not vaccinate when air temperature exceeds 86° F.*

I hereby certify that all bulls enrolled under my ownership have been administered the required vaccinations according to BQA guidelines on the date(s) indicated above.

Signature of Owner: \_\_\_\_\_ Date: \_\_\_\_\_

## **Southern Heifer Enrollment Checklist**

### **Due by September 9, 2022**

- Cooperator Enrollment Form
- Heifer Nomination Form(s)
- Individual Performance Record (See Rules and Regulations—Appendix II)
- Dams Performance Record (See Rules and Regulations—Appendix II)

Submit to: Kevin Shaffer  
890 Tacy-Sunhsine Ridge Rd  
Philippi, WV 26416

**NOTE:** *Eligible cooperators will be notified of the number of heifers accepted as soon as possible after the nomination deadline. You must fill out forms completely to be eligible.*

### **Due at Delivery**

- Certificate of Vaccination
- Negative Genetic Defect Report (Potential carriers only)
- Certification of Veterinary Inspection (Non-resident consignor only)
- \$250 per heifer
- Original Registration Certificate (Signed for Transfer)
- Liability Waiver/Hold Harmless Agreement